

We are a small team of medical physicists, experienced in the field of radiotherapy. We have set it our goal to develop and implement new treatment techniques and technologies.



For more information, feel free to contact us:

*7Sigma, n.v.
Kasteeldreef 2
3150 Tildonk (Leuven)
Belgium*

www.7sigma.be

email: info@7sigma.be



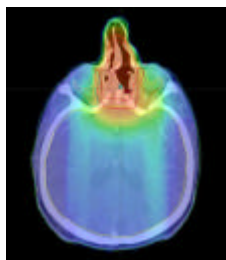
*Dominique Huyskens Ph.D.
Managing Partner
dominique.huyskens@7sigma.be
+32 476 225345*



*Ann Van Esch Ph.D.
Managing Partner
ann.vanesch@7sigma.be
+32 472 530618*



7Sigma
qA team in radiotherapy physics

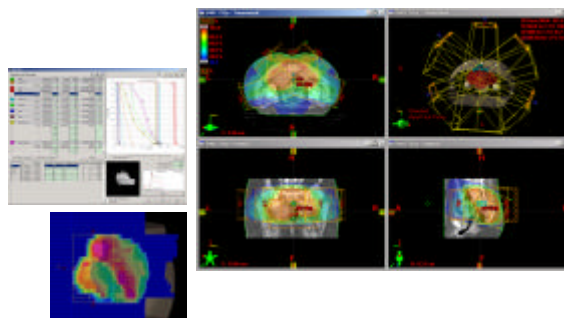


**On-site implementation
of IMRT
for the Varian solution:**

a total package

What do we do?

- We calibrate the dynamic MLC and implement a dMLC QA protocol.
- We perform the necessary measurements to configure the Eclipse TPS for IMRT.
- We implement a protocol for TPS and patient IMRT QA in a phantom, adapted to the locally available equipment.
- If a portal dosimetry license is available, we perform the necessary measurements to configure portal dosimetry for routine patient pre-treatment QA.
- We give a practical training for IMRT planning.
- We assist in the planning, QA and treatment initiation of the first IMRT patients.

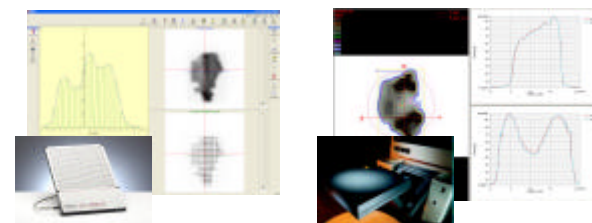


Does the implementation interfere with the ongoing routine?

Hardly. We do need some Clinac time, but not necessarily during normal working hours. A few hours per Clinac are sufficient. However, we do require the availability of one Eclipse workstation during most of our stay.

How long does it take before the first patient can start?

Two to four weeks, depending on the number of Clinacs to be included and the number of people to be trained.



Is additional QA material required?

For phantom measurements, simple solid water plates are most suitable. We recommend a 2D ion chamber matrix rather than rely on film dosimetry.

For routine pre-treatment patient QA, portal dosimetry is by far the most efficient solution.

How much does it cost?

The total cost covers our travel and accommodation expenses and a daily fee.

The price is fixed beforehand, based on an estimate of the number of days.



What happens after we're gone?

All steps in the implementation are performed in close collaboration with the local physicists/dosimetrists to assure optimal knowledge transfer. If questions should still arise, communication by email or phone is usually sufficient to provide the desired support.